



### Tracking and luminaire:

First trunking rail should have one side connecting plate&last trunking rail with no connecting plate on both sides, then fix the Luminaire to trunking rail then lock holder, then keep end caps at both sides.



### Step 1 Mounting Suspension

Adjust length of suspension cord:  
a. press down Hexagon bolt;  
b. Pull in/out cord to adjust length



### Step 2 Connecting Power Supply



Put in conduit with cable inside and pull up conduit gland to lock

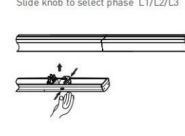
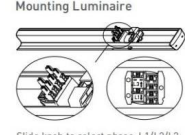
Connect wires according labeling on wires to feed in connector then connect to connector in trunking rail

### Step 3 Connecting Trunking Rail

Both trunking rails should keep in perfect position then push to click



### Step 4 Mounting Luminaire



Slide knob to select phase L1/L2/L3

Make sure male & female connectors in right position then fix the luminaire to trunking rail

### Step 5 LED linear lighting system



### Wire diagram of triple circuits function



### Pendant and mounting installation

Starting Installation distances point should be 800 mm to 1000 mm, then in between 1st & 2nd point should be 3000 mm max



### Four options for installation



Safety notes:  
Installation should be performed only by  
qualified electrician .

- Make sure no voltage while installation .
- Connect cable wires according to wire labeling .
- Max current should not exceed 16A in one power feed in circuit.



LED linear lighting System composition

#### Terminal module:

Terminal module can be independently installed as  
a single unit, it also can be connected at end of one  
linear light row.



- 1 Trunking Rail
- 2 Power cable feed in hole
- 3 Luminaire
- 4 Driver
- 5 Lock holder
- 6 End cap
- 7 Male connector
- 8 Female connector
- 9 Installation cord

